

Green Infrastructure Coalition Donor Briefing

July 11, 2016

Rhode Island Foundation



**Transforming RI Urban
Landscapes with Nature
Based Solutions:
Green Infrastructure**

Stormwater
Flooding
Cooling
Quality of Life
Social Equity
Climate Resilience



Coalition Partners

Aquidneck Island Planning Commission
Aquidneck Land Trust
Audubon Society of Rhode Island
Birchwood Designs
Blackstone Parks Conservancy
Blackstone River Coalition
Clean Ocean Access
Clean Water Fund
Conservation Law Foundation
Emerald Cities Providence
ESS Group, Inc.
FILARSKI/Architecture+Planning+Research
Friends of the Moshassuck
Green & Healthy Homes Initiative
Groundwork Providence
Mass Audubon
Narragansett Bay Research Reserve
Newport Restoration Foundation
American Society of Landscape Architects, Rhode Island Chapter
RI Nursery and Landscape Association
Save The Bay
Save The Lakes
Sierra Club
The Nature Conservancy
The Trust for Public Land
U.S. Green Building Council Rhode Island Chapter
UPP Arts
University of Rhode Island Coastal Resources Center/SeaGrant
Woonasquatucket River Watershed Council

THANK YOU!!

Coalition Funders
Rhode Island Foundation
van Beuren Charitable

Foundation
The Prospect Hill Foundation

Coalition Projects Funded by:

- **Environmental Protection Agency**
- **National Fish & Wildlife Foundation**
 - **RI Dept. of Env. Management**
 - **RI Dept. of Health**
- **Southeast New England Coastal Restoration Program**
- **Department of the Interior**

The GIC is also supported by:

RI Coastal Resources
Management Council
RI Dept. of Env. Management
RI Dept. of Health
City of Newport
City of Pawtucket
City of Providence
Town of Middletown



Policy Plans & Projects Communications

Policy – Creating Enabling Policies and Funding

- Stormwater Utilities
- Bond funding
- Innovative Nature Based Strategies - Amphibians
- Local ordinances

Bond Resolutions

League of Cities and Towns

Barrington

Bristol

Central Falls

Charlestown

Cranston

Cumberland

East Greenwich

Jamestown

Lincoln

Little Compton

Middletown

Newport

North Providence

North Smithfield

Pawtucket

Portsmouth

Richmond

Smithfield

South Kingstown

Westerly

West Warwick

Westerly

Woonsocket





**Plans, Projects &
Workforce Development**
Residential
Commercial
Coastal

Communication

Tours

Presentations

Web site

Social media



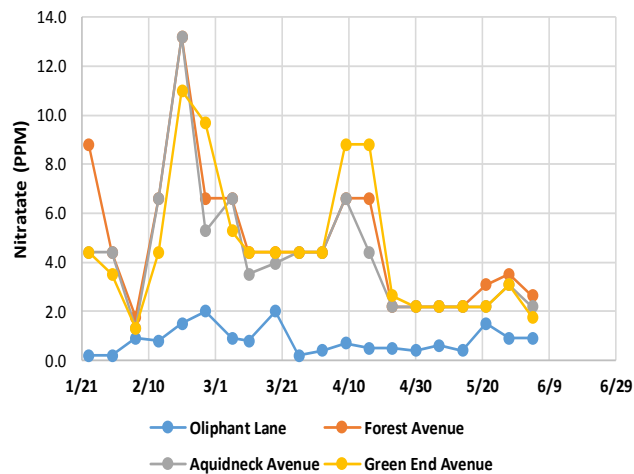
Aquidneck Island



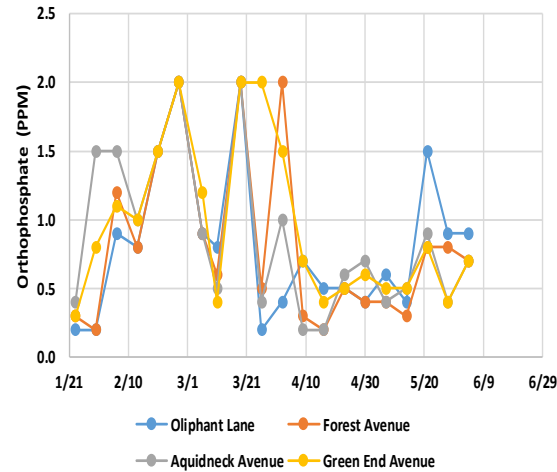
Watershed management strategy



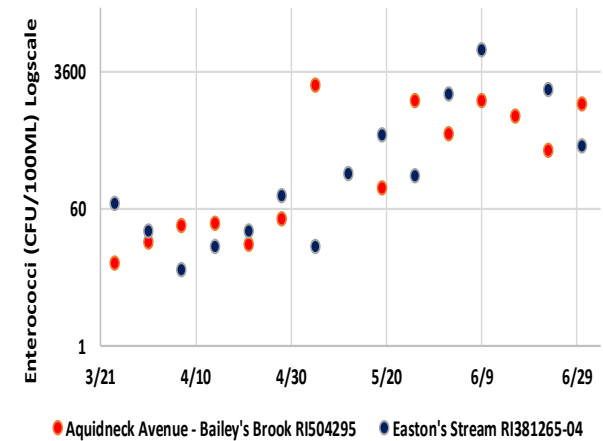
2016 Nitrogen Monitoring



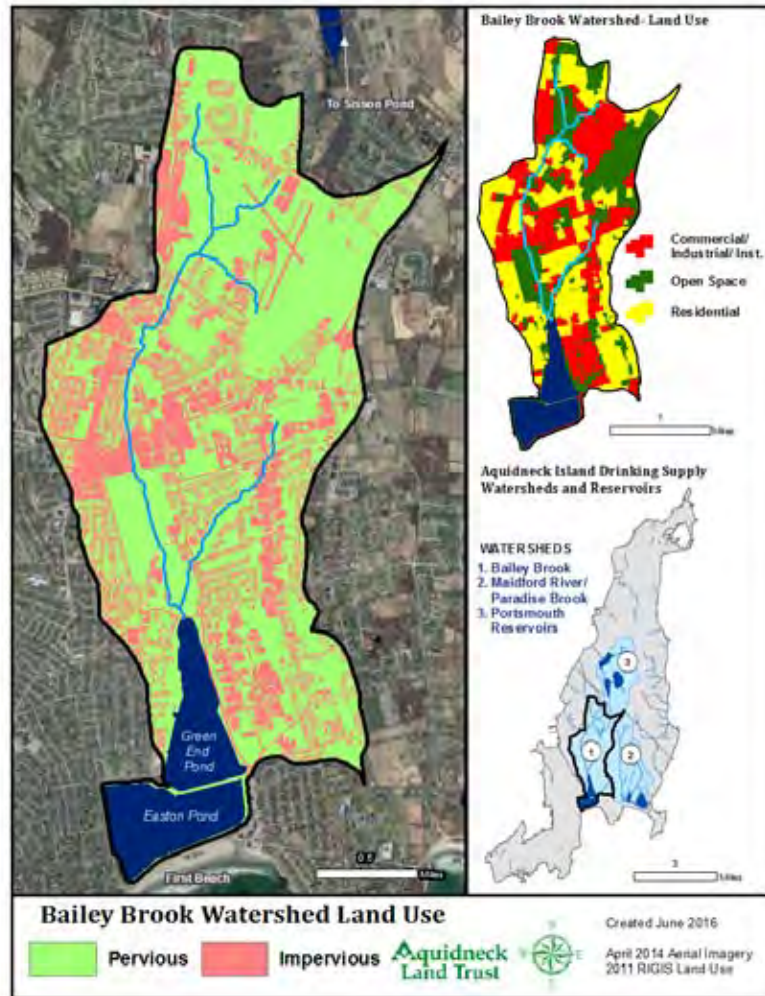
2016 Phosphorous Monitoring



2016 Bacteria monitoring



Remediation and Solutions



Green Infrastructure Job Training and Certification



Groundwork Providence
Woonasquatucket River
Watershed Council





BEFORE



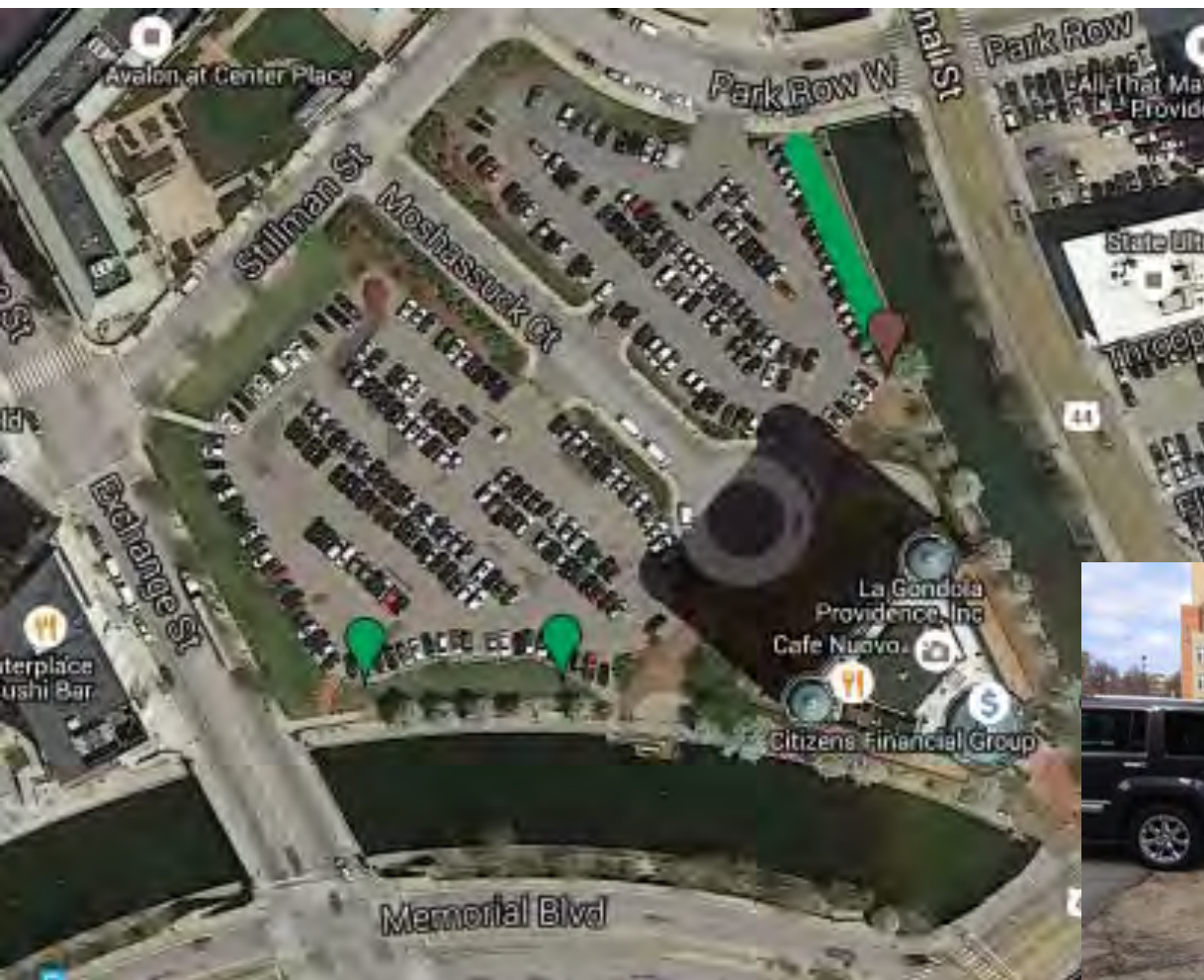
AFTER



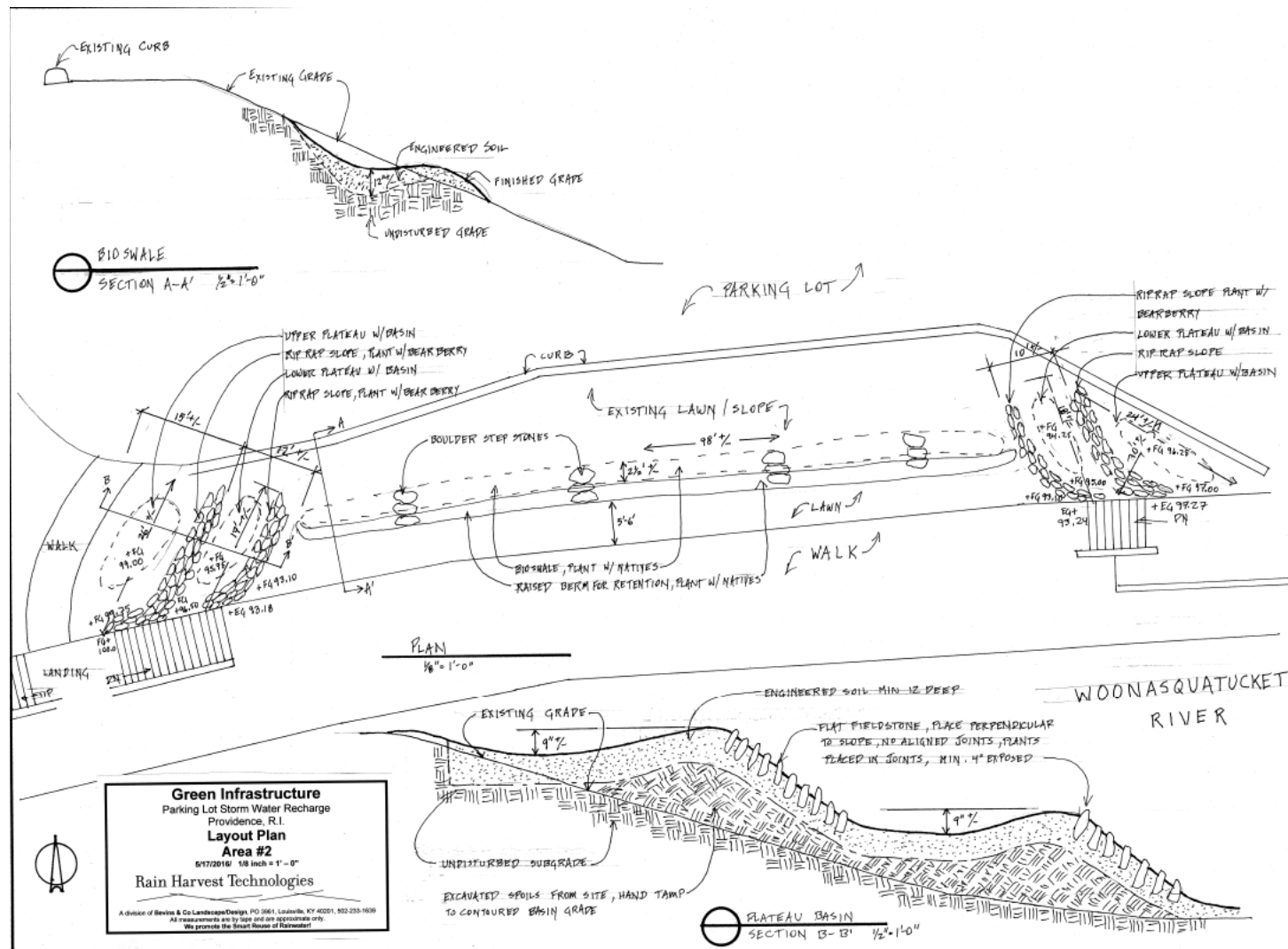
Workforce Development Classroom Training Field Experience



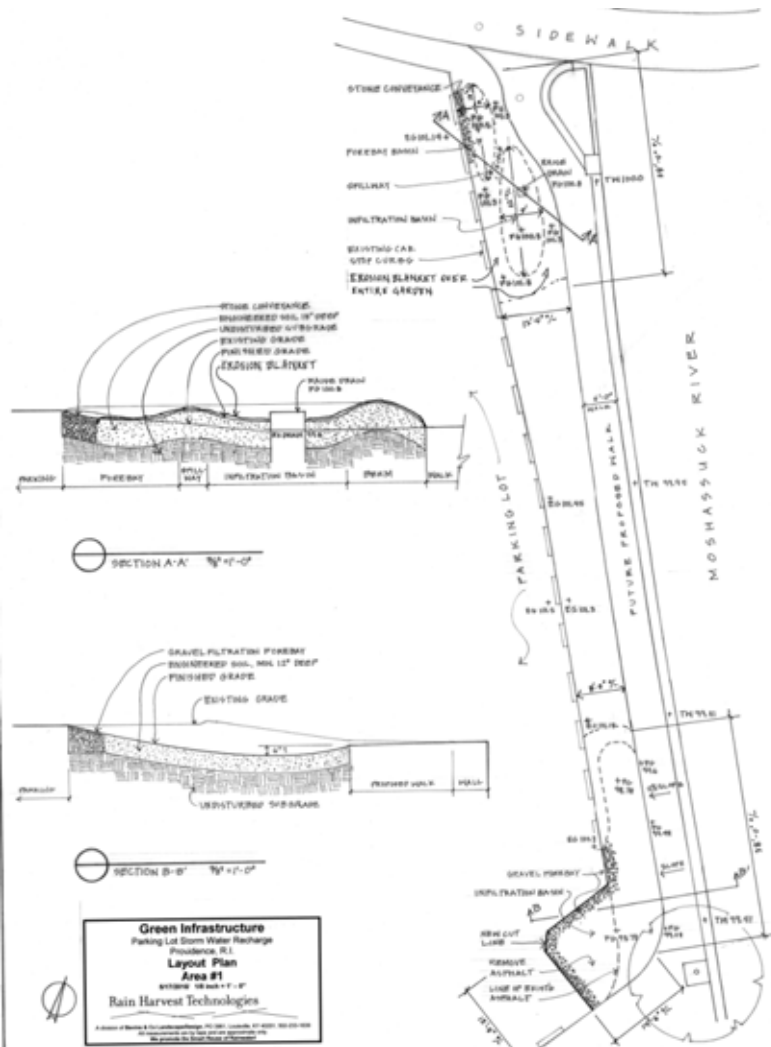
Citizens Plaza Green Infrastructure Installations



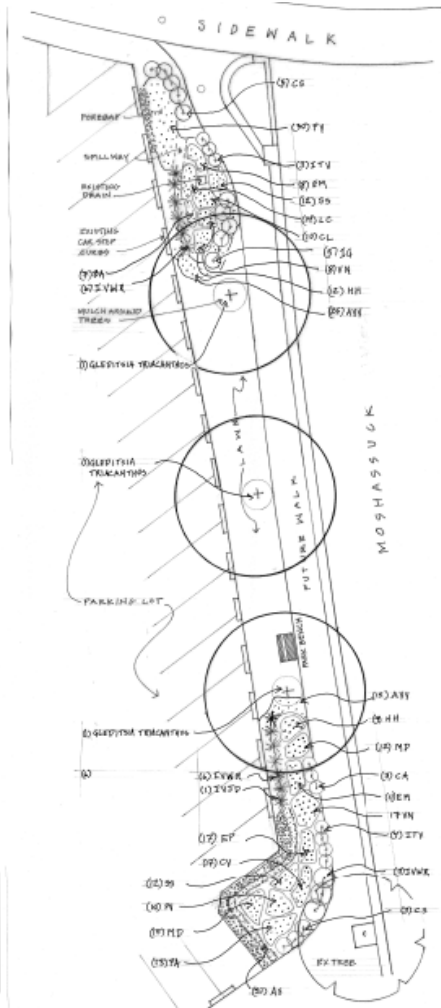
Preliminary Design – Woonasquatucket River side

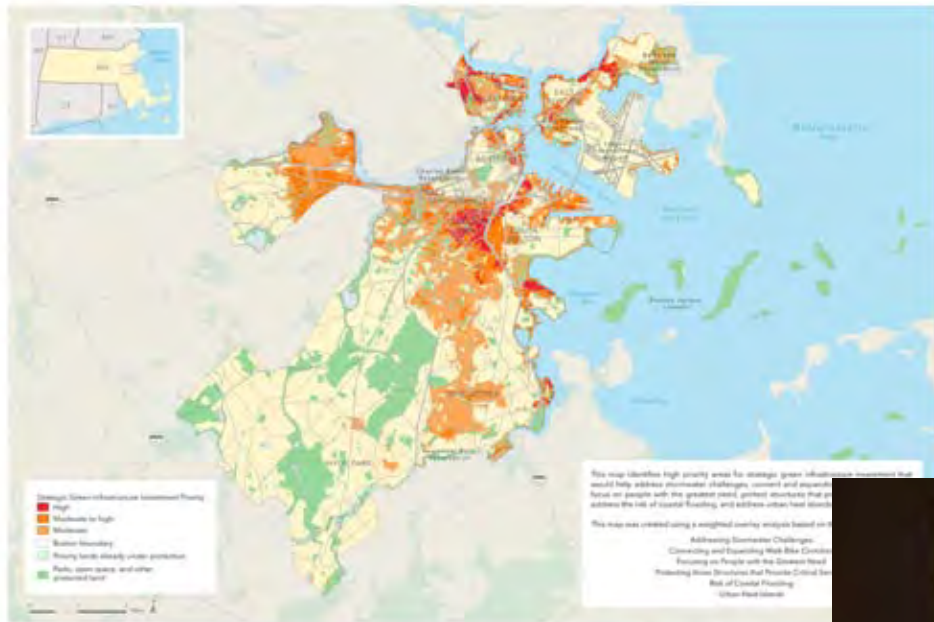


Preliminary Design – Moshassuck River Side



1	2	3	4
5	1	DECEMBER 1990	DECEMBER 1990
6	2	DECEMBER 1990	DECEMBER 1990
7	3	DECEMBER 1990	DECEMBER 1990
8	4	DECEMBER 1990	DECEMBER 1990
9	5	DECEMBER 1990	DECEMBER 1990
10	6	DECEMBER 1990	DECEMBER 1990
11	7	DECEMBER 1990	DECEMBER 1990
12	8	DECEMBER 1990	DECEMBER 1990
13	9	DECEMBER 1990	DECEMBER 1990
14	10	DECEMBER 1990	DECEMBER 1990
15	11	DECEMBER 1990	DECEMBER 1990
16	12	DECEMBER 1990	DECEMBER 1990
17	13	DECEMBER 1990	DECEMBER 1990
18	14	DECEMBER 1990	DECEMBER 1990
19	15	DECEMBER 1990	DECEMBER 1990
20	16	DECEMBER 1990	DECEMBER 1990
21	17	DECEMBER 1990	DECEMBER 1990
22	18	DECEMBER 1990	DECEMBER 1990
23	19	DECEMBER 1990	DECEMBER 1990
24	20	DECEMBER 1990	DECEMBER 1990
25	21	DECEMBER 1990	DECEMBER 1990
26	22	DECEMBER 1990	DECEMBER 1990
27	23	DECEMBER 1990	DECEMBER 1990
28	24	DECEMBER 1990	DECEMBER 1990
29	25	DECEMBER 1990	DECEMBER 1990
30	26	DECEMBER 1990	DECEMBER 1990
31	27	DECEMBER 1990	DECEMBER 1990
32	28	DECEMBER 1990	DECEMBER 1990
33	29	DECEMBER 1990	DECEMBER 1990
34	30	DECEMBER 1990	DECEMBER 1990
35	31	DECEMBER 1990	DECEMBER 1990





Overall Priorities for Strategic Green Infrastructure Investment

CLIMATE-SMART CITIES: GREEN INFRASTRUCTURE FOR A LOW-CARBON, RESILIENT BOSTON

Green Infrastructure Coalition's Two Year Plan

Using LIDRA: Five steps




1. Pre-planning data gathering
2. Stormwater management goal setting
3. Stakeholder-facilitated GI scenario building
4. Cost-effectiveness simulations
5. Post-modeling policy development

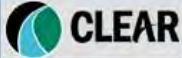
Get a **GRIP** on Rhode Island's Coastline: Green and Resilient Infrastructure Planning


Storymaps use maps, images, and experience to share practical lessons and engage audiences.

UConn Green Infrastructure Virtual Tour

A virtual tour of some of the green infrastructure practices being utilized on the University of Connecticut's Campus in Storrs, CT.


A story map   








Whetten Center Rain Garden


This rain garden/bioretention area was installed in the middle of a traffic turnaround. A similar approach could be used in cul-de-sacs. Note that the map



Pervious Brick Pavers



Business School Pavers



Whetten Center Rain Garden



Whetten Center Parking Lot Bioretention Island


Pervious Asphalt Parking


Oak Hall Pavers


Bioretention

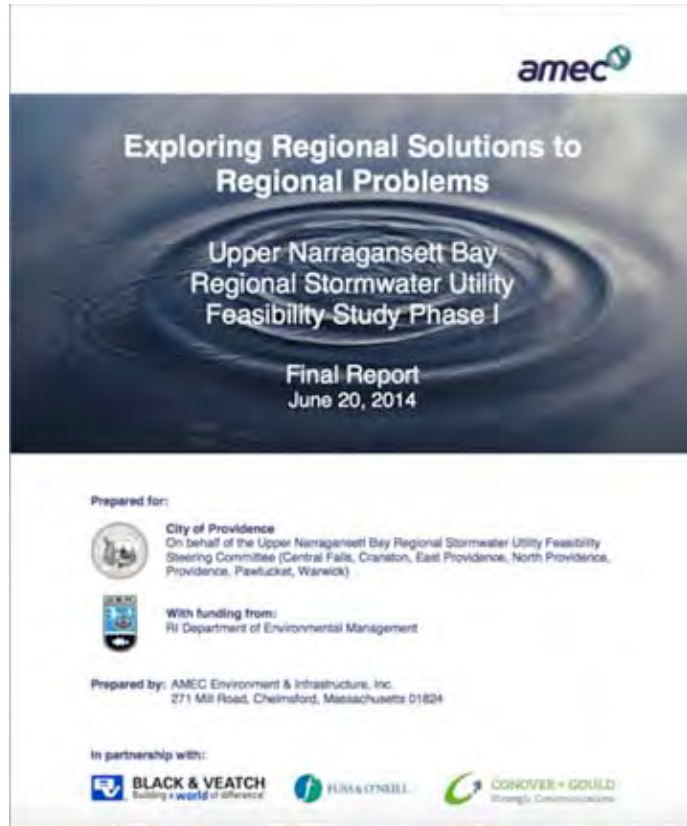

F

Microsoft | Esri, HERE, DeLorme, IPC 

2. Building Green Infrastructure into Neighborhoods and Creating Job Opportunities



3. Institutionalizing Nature Based Green Infrastructure Solutions at City And State Levels

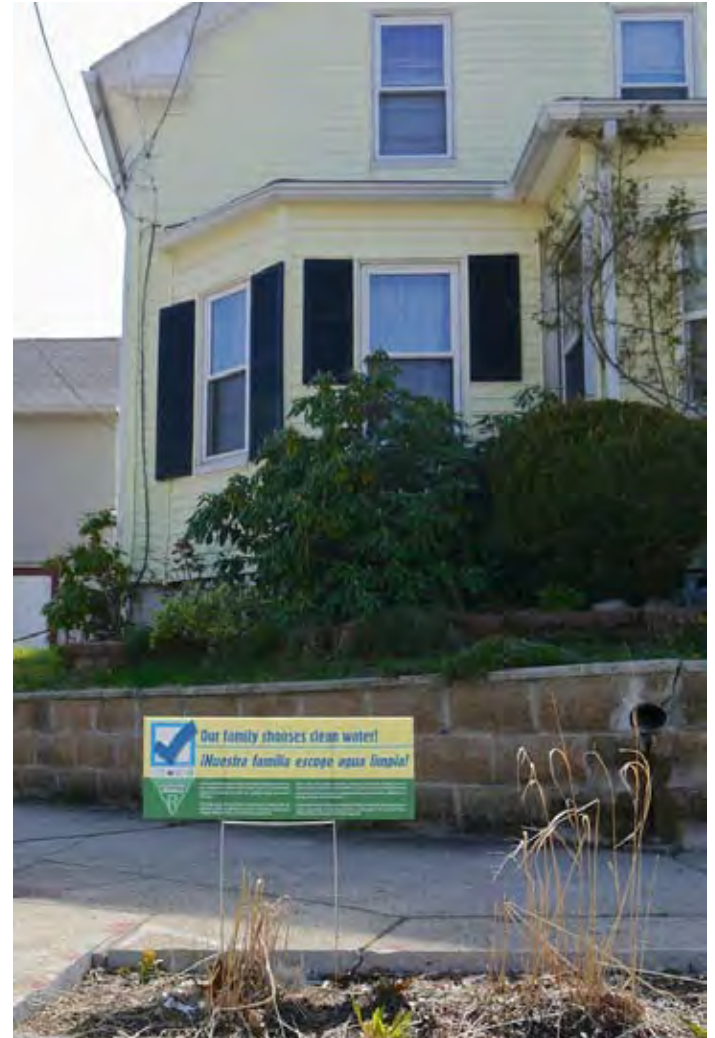


U.S. GREEN BUILDING COUNCIL
RHODE ISLAND CHAPTER



MIDDLETOWN
Rhode Island

4. Building the Constituency for a System Approach to Green Infrastructure





2016 – 2017 Strategies

Bringing nature to our neighborhoods

- to create healthy places
- soften climate change impacts
 - boost our economy

1. Mapping and engaging the community
2. Building GI into neighborhoods and creating local jobs
3. Building the constituency
4. Institutionalizing GI solutions at the city and state level





THANK YOU!

Presentation by:

Meg Kerr, Audubon Society of RI
Dave McLaughlin, Clean Ocean Access
Amelia Rose, Groundwork Providence
John Berard, Clean Water Fund